



1 Features

- Wide HV range from 4.5 V to 30 V with UVLO
- 5A Peak Current Transient
- Smart Switch specially designed for Laser Diode
- TTL/CMOS Logic Inputs
- Input pins capable of handling -10 V
- Inverting and non-inverting inputs
- UVLO and over-temperature protection
- QFN-12L 2.3mm*2.5mm Package

2 Applications

- VCSEL/EEL Driver

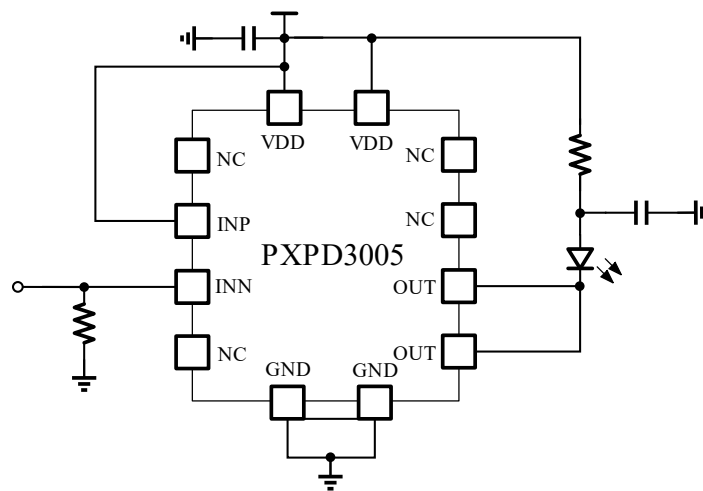
3 Description

The PXPD3005 is specifically designed to drive a Laser Diode with robust current sink capability, enabled by a specially designed smart switch. It features both inverting and noninverting inputs to accommodate various application requirements for input polarity. The inputs are compatible with TTL/CMOS logic levels and can withstand input voltages ranging from -10 V to HV independent of the HV supply voltage, ensuring high robustness.

The driver features undervoltage lockout (UVLO) and over-temperature protection (OTP), ensuring that the device will not be damaged in overload or fault conditions.

PXPD3005 is available in 2.3mm*2.5mm QFN-12L package to meet the size and gate loop inductance requirements for high-speed switching applications.

Typical System Diagram



Anode to Power